



T-SLOT

80/20
AUSTRALIA

The Industrial Erector Set



BE AN ENGINEER

ENDLESS DREAMS...
ENDLESS POSSIBILITIES...

Kit



5 MODELS TO BUILD

ASSEMBLY GUIDE



T-SLOT

WHAT CAN YOU BUILD WITH 80/20



TABLE



EASEL



GUARD





T-SLOT

WHAT CAN YOU **BUILD**^{WITH} **80/20**



WORKSTATION

- ⊕ Drawing Table
- ⊕ Storage Cabinet



ROLLER DOOR

- ⊕ Custom Bookshelf
- ⊕ Entertainment Center
- ⊕ Custom Cabinet

GUARD 1



WHAT YOU NEED

Profile A (2)	Fastener LL (4)
Profile B (2)	Fastener QQ (2)
Profile C (2)	Fastener SS (4)
Panel A (1)	Fastener UU (4)

TIP Preload fastener QQ with fastener LL and SS before beginning your build.

STEP 1

Slide preloaded fastener QQ, from tip above, into T-SLOT profile C (2), center and tighten down with wrench.



STEP 2

Take fastener UU (2) and loosen T-NUTS. Place fastener into one end of profile B (1) and slide into profile A (2). Make sure fasteners are facing outward and tighten one profile A at each end of profile B with wrench.



STEP 3

Insert panel A into U-shape frame. Cap with profile B (1), making sure counterbores face out. User fastener UU 92) and secure with a wrench.



STEP 4

Locate profile C (2) with pre-assembled hardware. Attach on e profile (2) to each end of profile A using preloaded T-NUT. Tighten with wrench.



WHAT YOU NEED

Profile C (2) Fastener VV (4)
Profile D (1) Fastener TT (6)
Profile E (4) Fastener LL (6)
Panel G (2)

TIP Preload fastener TT into fastener LL to make a fastener assembly for Step 1.



1 STEP

Slide one fastener assembly into T-SLOT of profile D (1). Slide profile C (1) over the bolt and center. Tighten down.



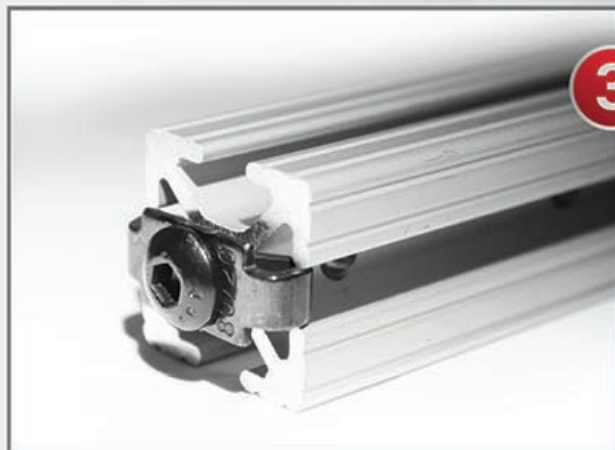
Load the remaining five fastener assemblies on the crossbar profile D. Finish the tabletop by sliding on profile G (2) then profile C (1). Line up the profiles and tighten bolts.

STEP 2



3 STEP

Preload profile E (4) on one end with fastener VV (4). Be sure NOT to tighten the bolts down completely.



STEP 4

Attach preloaded profile E (4) to each corner of the assembled tabletop. Slide fastener into open T-SLOT and tighten.



EASEL 3



WHAT YOU NEED

Profile A (2)	Fastener EE (1)	Fastener UU (2)
Profile B (2)	Fastener QQ (2)	Fastener LL (4)
Profile D (2)	Fastener PP (1)	Fastener KK (3)
Panel B (1)	Fastener DD (1)	Fastener SS (10)

TIP When preloading do NOT tighten bolts down all the way.

STEP 1



Preload fastener QQ (2) with fastener LL (4) and SS (4). Preload fastener EE (1) with fastener SS (4) and KK (2).

STEP 2

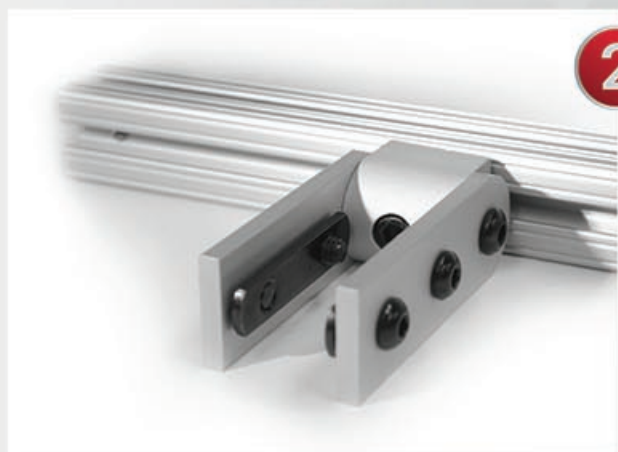
Slide the preloaded fastener EE to the center of profile B (1) and tighten screw on nub.

STEP 3

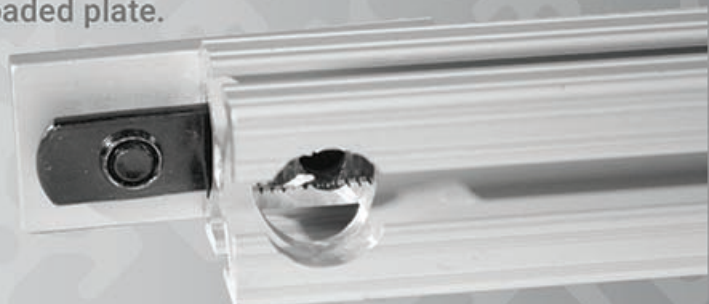


STEP 4

Preload fastener PP with fastener SS (2) and KK (1). Secure easel leg on opposite side with preloaded plate.



Join profile D (2) together using fastener DD to make the easel leg.



5 STEP

Use fastener UU (2) to secure profile A (2) to each end of profile B (with pivot assembly) from Step 2.

STEP 6

Turn build upside down and insert panel B (1).

7 STEP

Slide preloaded fastener QQ (2) onto each end of second profile B (1) and tighten down bracket. Slide other half of brackets onto assembly connecting two A profiles. Slide into place to enclose panel and tighten.

STEP 8

Using preloaded fastener EE, add easel leg to build by sliding T-NUTS into leg T-Slots and tightening down.

PIVOT ASSEMBLY

Mount two profiles together for positioning that ranges 0-180 degree.

Comprised of a bolt and two cams, this fastener connects two profiles end to end.

BUTT FASTENER

ANCHOR FASTENER

Utilizes a cam, bolt and T-NUT. Drop the fastener into the counterbore and attach a mating profile with T-NUT.

ROLLER DOOR 4

WHAT YOU NEED

Profile A (2) Profile G (2) Fastener QQ (4)
Profile B (2) Profile C (1) Fastener SS (8)
Profile D (2) Fastener AA (4) Fastener UU (8)
Panel E (4) Fastener LL (8) Fastener VV (2)
Profile F (2)

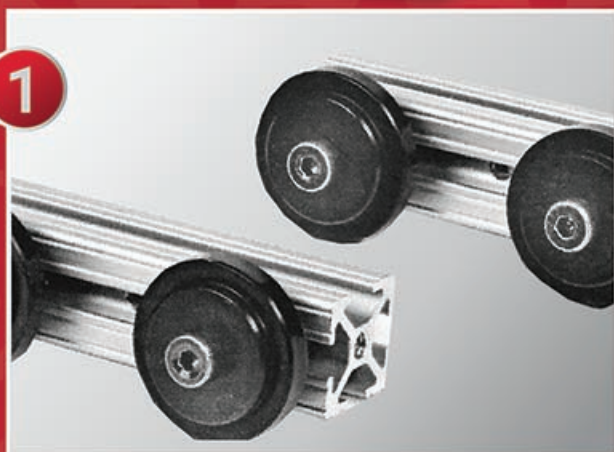
TIP When preloading do not tighten bolts down all the way.



Preload fastener QQ (4) with fastener LL (8) and SS (8) before beginning your build.

Mount fastener AA (4) flush with the end of profile E (2) and tighten down.

STEP 1

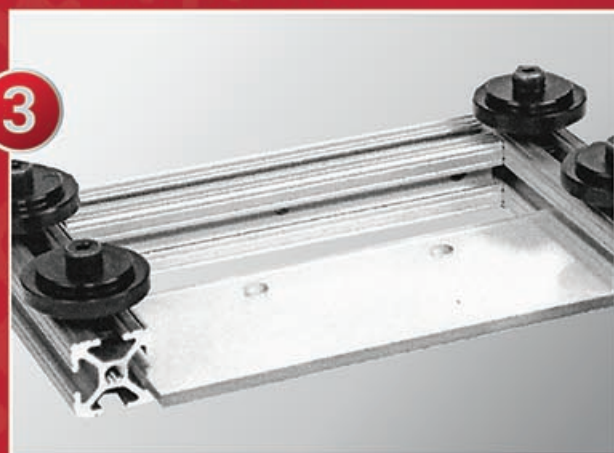


Connect both profile assemblies from Step 1 to profile D (1) using fastener UU (2).

STEP 2



STEP 3

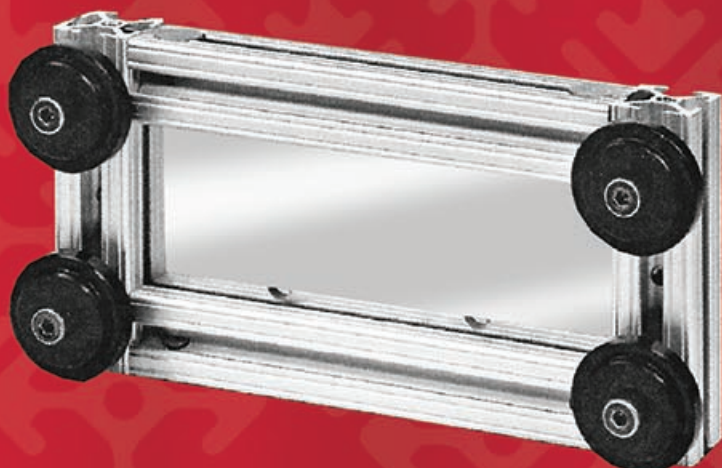


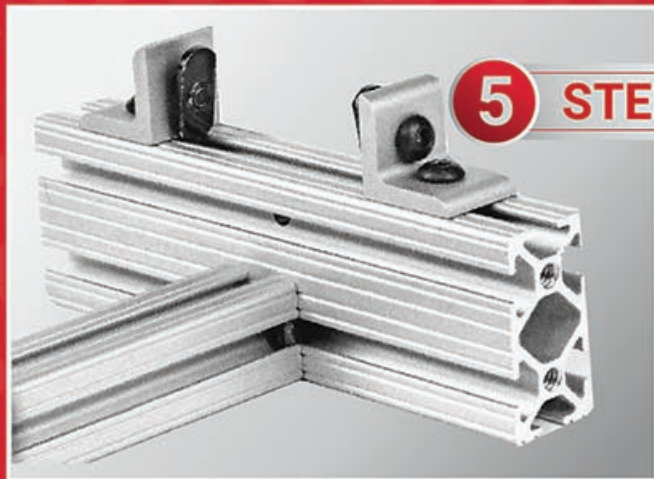
Insert panel C (1) into open T-SLOT of frame. Cap off frame with second profile D (1) and fastener UU (2).

STEP 4



Preload fastener VV (1) into end of profile A (1). Slide preloaded profile into profile G (1). Center over access hole and tighten down.





5 STEP

Connect profile F (1) to profile A of assembly. Do not tighten.

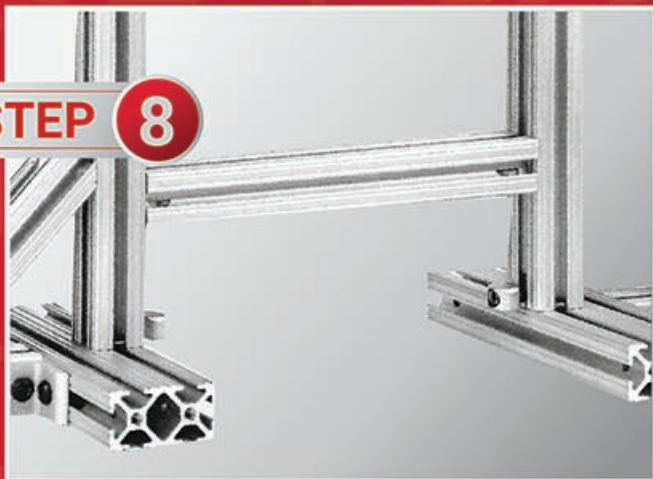
STEP 6



7 STEP

Take profile E (1) and slide into the place, connecting profile F and profile G. Make sure T-Nuts are secure in T-SLOTS and tighten down with wrench. Repeat Steps 4-7 to build second vertical support.

STEP 8



Stand supports up with braces facing out. Slide fastener UU (2) upside down into the inside T-SLOT of supports. Attach profile B (1) using fasteners and loosely tighten to connect supports.

9 STEP



Turn frame upside down to install roller door to inside T-Slot of frame. Adjust lower profile B down to allow to secure rolling motion.

STEP 10



Use profile B (1) and fastener UU (2) to cap off top frame.

WORKSTATION 5



WHAT YOU NEED

Profile A (2)	Fastener BB (1)	Fastener NN (3)
Profile B (2)	Fastener EE (1)	Fastener PP (1)
Profile C (2)	Fastener FF (4)	Fastener QQ (1)
Profile E (2)	Fastener GG (4)	Fastener RR (4)
Profile F (2)	Fastener JJ (5)	Fastener SS (9)
Panel B (1)	Fastener KK (3)	Fastener TT (8)
Panel C (1)	Fastener LL (5)	Fastener UU (4)
	Fastener MM (1)	Fastener VV (2)

TIP When preloading do not tighten bolts down all the way.

STEP 1



Preload fastener MM (1) with fastener SS (3) LL (1) KK (1). Preload one side of fastener QQ (1) with fastener SS (1) and LL (1). Preload non-slotted side of fastener NN (3) with fastener TT (3) and LL (3). Preload fastener EE (1) arms with fastener SS (4) and KK (2)

STEP 2



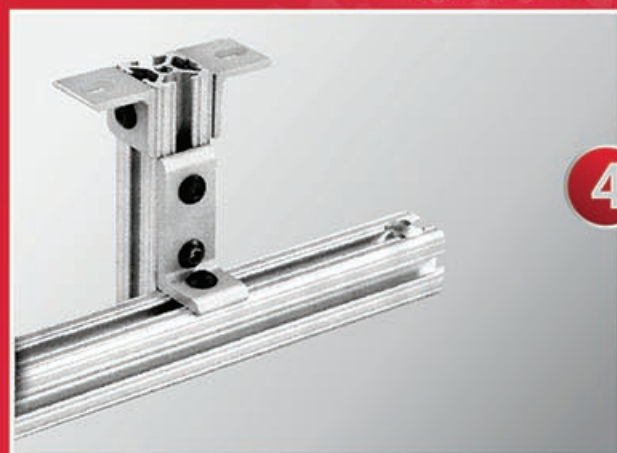
Preload fastener VV (1) into profile C (1) end. Do not tighten. Slide profile F (1) onto preloaded profile C (1). Slide subassembly onto profile A (1) with access holes facing out. Tighten. Repeat step to make second leg.

STEP 3



Secure preloaded fastener NN (2) flush with profile E (1).

STEP 4



Tighten preloaded fastener MM (1) in center of profile B (1) with counterbores facing up. Slide profile E (1) from step 3 onto other half of the bracket to complete lower cross support. Tighten with wrench.

5 STEP

Use fastener UU (2) to attach the lower cross support approximately 2" from bottom of legs.

STEP 6

Cap off top of frame with profile B (1) and fastener UU (2).

7 STEP

Attach panel B (1) using fastener RR (2), FF (2) & GG (2).

STEP 8

Mount fastener PP (1) to underside of top cross support using fastener SS (1) and BB (1). Attach preloaded fastener NN (1) to front of frame level with fastener PP.

9 STEP

Stand supports up with braces facing out. Slide fastener UU (2) upside down into the inside T-SLOT of supports. Attach profile B (1) using fasteners and loosely tighten to connect supports.

STEP 10

Use T-NUT on nub of preloaded fastener EE (1) to attach to top of frame (opposite top panel). Slide profile E (1) into the pivot assembly so that the access holes face upward. Extra: Use preloaded fastener QQ as tool hanger on frame. Finish off frame with fastener JJ (5) and TT (5).

INSTRUCTIONS



ASSEMBLE STEPS:

ANCHOR FASTENERS

STEPS 1:

Anchor Fasteners are composed of a (SHCS) socket head cap screw cam and T-nut.



STEPS 4:

While holding the anchor fastener in the counterbore hole, slide the mating profile into the place.



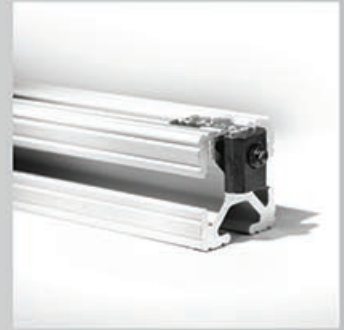
STEPS 2:

Anchor Fasteners come pre-assembled. Slightly loosen the nut and bolt.



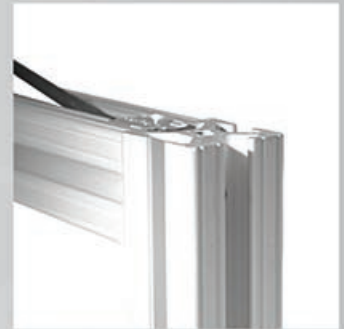
STEPS 3:

Load the assembled anchor fastener into the counterbore hole. Be sure to position the T-nut with offset hole oriented towards the top of fastener.



STEPS 5:

Square and align the mating profile. Using a T-wrench, tighten the SHCS in a clockwise motion until the profiles are securely fastened.



ASSEMBLE STEPS:

END FASTENERS

STEPS 1:

End fasteners are composed of a button head socket cap screw (BHSCS) and a wing clip.



STEPS 3:

Orient the wing clip in the direction of the mating profile's T-SLOT. Begin to screw the BHSCS into the tapped hole of the mounting profile. Do not fully tighten.



STEPS 2:

Pre-assemble by placing the BHSCS through the hole in the wing clip as shown in the photo at left.



STEPS 4:

Slide the mating profile into the place. When aligned, the access hole on the mating profile should align with the BHSCS.



STEPS 5:

Place a T-wrench into the access hole until the wrench head inserts into the BHSCS. Tighten clockwise until secure.

INSTRUCTIONS



ASSEMBLE STEPS:

CORNER BRACKETS

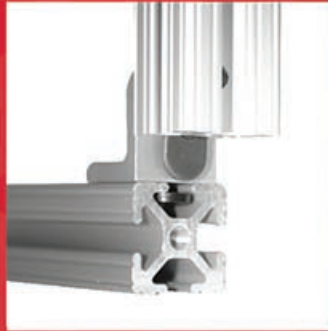
STEPS 1:

Brackets require three main components: the bracket, flanged button head socket cap screws (FBHSCS), and T-NUTS.



STEPS 4:

Slide the mating profile onto the bracket; square and align both profiles.



STEPS 2:

Pre-load the bracket by placing the FBHSCS through the pre-drilled holes and screws into the T-NUTS to engage the thread. (Face pilot projection on T-NUT away from the bracket)



STEPS 3:

Slide the bracket into the T-SLOT of one profile. Do not fully tighten.



STEPS 5:

Using a T-wrench, tighten all FBHSCS until the connection is secure.



ASSEMBLE STEPS:

STRUCTURAL PIVOTS

STEPS 1:

Preload structural pivot with button head socket cap screws (BHSCS) and double slide-in T-NUTS.



STEPS 3:

Loosen T-NUTS on hinge arms and slide mating profile into hinge arms.



STEPS 2:

Slide T-NUT on hinge into the T-SLOT of the profile. Tighten the hinge, but do not tighten fully until hinge is positioned to desired point.



STEPS 4:

Use a T-wrench to tighten down the hinge arm bolts.



STEPS 5:

Position hinge arms at desired angle and secure bolts into place.

MATERIAL



Profile A - (Qty.2)



Profile B - (Qty.2)



Profile C - (Qty.2)



Profile D - (Qty.2)



Profile E - (Qty.4)



Profile F - (Qty.2)



Profile G - (Qty.2)



Profile H - (Qty.1)



FASTENER AA
Roller Wheel



FASTENER BB
Drop-In T-NUT



FASTENER CC
Brake Assembly



FASTENER DD
Butt Fastener



FASTENER EE
Pivot Assembly



FASTENER FF
1/4" Washer



FASTENER GG
1/4-20 Hex Nut



FASTENER HH
Lift-Off Hinge



FASTENER JJ
End Cap



FASTENER KK
Double Slide-In T-NUT



FASTENER LL
Slide-In Econ. T-NUT



FASTENER MM
3-Hole Corner Bracket



FASTENER NN
Panel Mount Bracket



FASTENER PP
2-Hole Flat Plate



FASTENER QQ
2-Hole Corner Bracket



FASTENER RR
1/4-20x3/4" FBHSCS



FASTENER SS
1/4-20x1/2" BHSCS



FASTENER TT
1/4-20x3/8" FBHSCS



FASTENER UU
Anchor Fastener



FASTENER VV
End Fastener

TOOLS INCLUDED

7/16 Box End Wrench
5/32 Hex Driver
3/16 Hex Driver

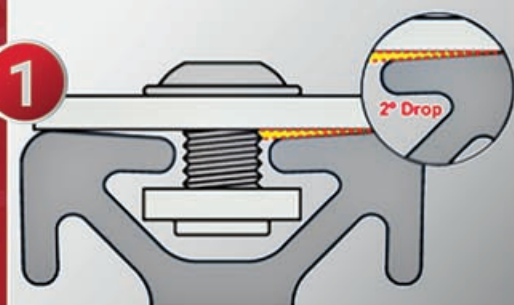


ASSEMBLY TIPS

Panel C - (Qty 1)
Panel B - (Qty 1)
Panel A - (Qty 1)

STEP 1

Make Sure T-NUTS are oriented correctly with the threaded pilot projection facing down.



STEP 2

Preload fasteners prior to building for quicker and more effective assembly.



STEP 3

Align-grooves help square up profiles and other components.





80/20
AUSTRALIA
The Industrial Erector Set

BE AN ENGINEER

ENDLESS DREAMS...
ENDLESS POSSIBILITIES...

Kit

C O N T I N U E B U I L D I N G



WITH A FASTENER TOOL KIT

WARNING: CHOKING HAZARD. Kit contains small parts. Not suitable for children under 3 years of age.